



02-Engine

Power suspension device.....2-691

Technical specifications2-691

Structure and installation location2-693

Removal and Installation2-696

02

دیجیتال خودرو

شرکت دیجیتال خودرو سامانه (مسئولیت محدود)

اولین سامانه دیجیتال تعمیرکاران خودرو در ایران



دیجیتال خودرو

شرکت دیجیتال خودرو سامانه (مسئولیت محدود)

اولین سامانه دیجیتال تعمیرکاران خودرو در ایران



Power suspension device

Technical specifications

Torque Specifications

Name	Torque range	
	Metric(Nm)	British(lb-ft)
Front suspension and subframe fixing bolts (MT)	75	55
Front suspension connecting bracket and transmission (MT)	60	44
Front suspension connecting bracket and front suspension (MT)	75	55
Rear suspension and subframe (MT)	75	55
Rear suspension connecting bracket and transmission (MT)	60	44
Rear suspension connecting bracket and rear suspension M12X1.25X100 (MT)	95	70
Rear suspension connecting bracket and rear suspension M10X1.25 (MT)	95	70
Left suspension and left suspension erection support (MT)	75	55
Left suspension and left suspension connecting bracket (MT)	75	55
Left suspension connecting bracket and transmission M10X1.25X60 (MT)	75	55
Left suspension connecting bracket and transmission M10X1.25X25 (MT)	60	44
Left suspension erection bracket and body (MT)	75	55
Right suspension and right suspension erection support (MT)	75	55
Right suspension and engine (MT)	75	55
Right suspension and body (MT)	75	55
Right suspension erection bracket and body (MT)	75	55
Front suspension and subframe fixing bolts (CVT)	75	55
Front suspension connecting bracket and transmission (CVT)	75	55
Front suspension connecting bracket and front suspension (CVT)	75	55
Rear suspension and subframe (CVT)	75	55
Rear suspension connecting bracket and transmission (CVT)	75	55
Rear suspension connecting bracket and rear suspension M12X1.25X100 (MT)	95	70
Rear suspension connecting bracket and rear suspension M10X1.25 (MT)	95	70
Left suspension and transmission	75	55
Left suspension erection bracket and body (CVT)	75	55



Power suspension device

Name	Torque range	
	Metric(Nm)	British(lb-ft)
Right suspension and right suspension erection support (MT)	75	55
Right suspension and engine (MT)	75	55
Right suspension and body (MT)	75	55
Right suspension erection bracket and body (CVT)	75	55

دیجیتال خودرو

شرکت دیجیتال خودرو سامانه (مسئولیت محدود)

اولین سامانه دیجیتال تعمیرکاران خودرو در ایران

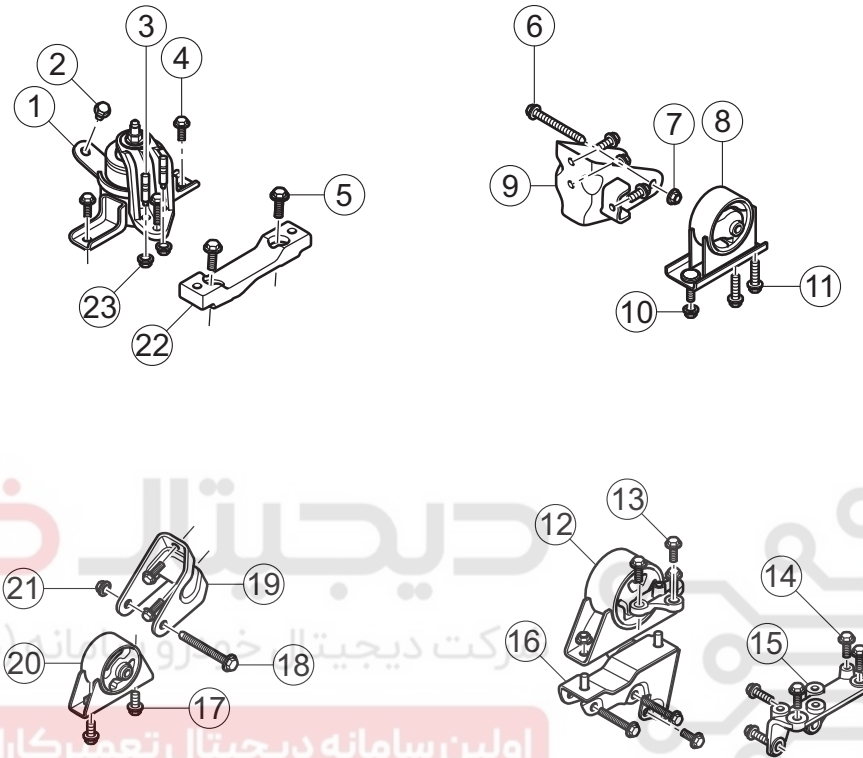


Structure and installation location

Part exploded view

Power mounting system (MT)

02



LFX60-SM-01067

No.	Part Name
1	Right mounting assembly
2	Right mounting assembly fixing bolt
3	Right mounting assembly fixing screw rod
4	Right mounting assembly fixing bolt
5	Right mounting installation support fixing bolt
6	Rear mounting connecting bracket bolt
7	Rear mounting connecting bracket nut
8	Rear mounting assembly.
9	Rear mounting connecting bracket
10	Rear mounting assembly fixing nut

No.	Part Name
13	Left mounting assembly fixing bolt
14	Left suspension erection bracket bolts
15	Left suspension erection bracket
16	Front mounting connecting bracket
17	Front mounting assembly fixing bolt
18	Front suspension erection bracket bolts
19	Front mounting connecting bracket
20	Front mounting assembly.
21	Front mounting connecting bracket nut
22	Right mounting installation support

力帆汽车
LIFAN AUTO

Power suspension device

No.	Part Name
11	Rear mounting assembly fixing bolt
12	Left mounting assembly

No.	Part Name
23	Right mounting assembly fixing nut

دیجیتال خودرو

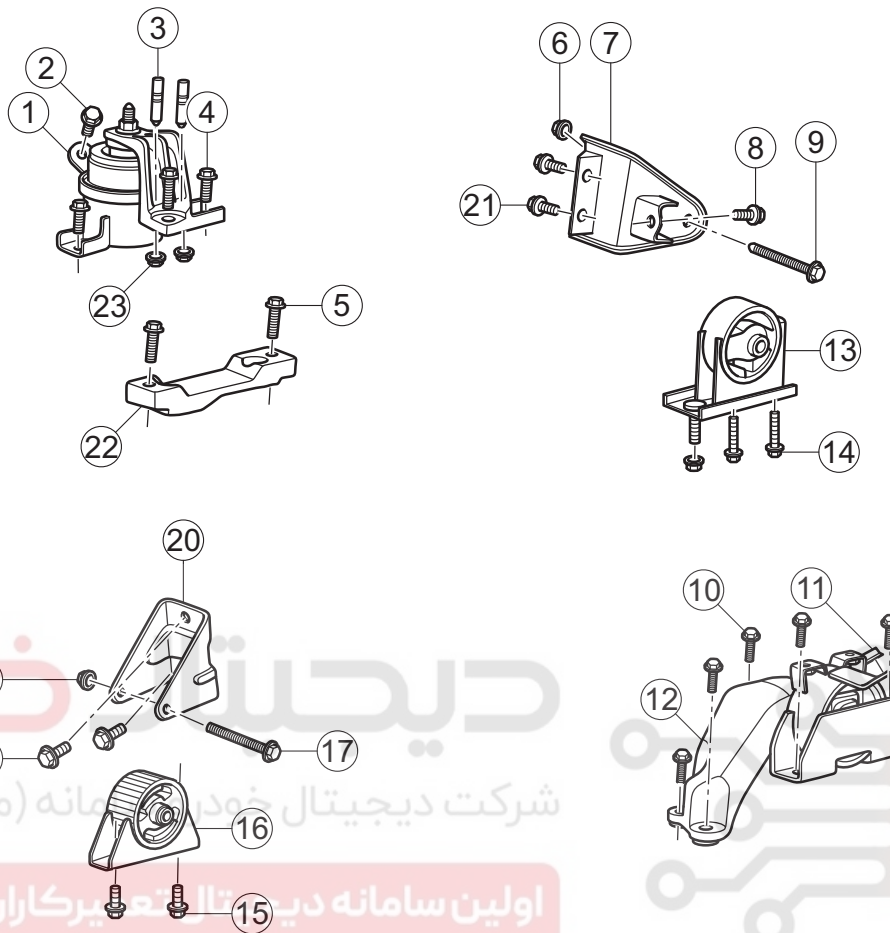
شرکت دیجیتال خودرو سامانه (مسئولیت محدود)

اولین سامانه دیجیتال تعمیرکاران خودرو در ایران



Power mounting system (CVT)

02



LFX60-SM-01068

No.	Part Name
1	Right mounting assembly
2	Right mounting assembly fixing bolt
3	Right mounting assembly fixing screw rod
4	Right mounting assembly fixing bolt
5	Right mounting installation support fixing bolt
6	Rear mounting connecting bracket nut
7	Rear mounting connecting bracket
8	Rear mounting connecting bracket bolt
9	Rear mounting connecting bracket bolt
10	Left mounting assembly fixing bolt
11	Left mounting assembly fixing nut
12	Left mounting assembly

No.	Part Name
13	Rear mounting assembly.
14	Suspension components fixing bolts
15	Front mounting assembly fixing bolt
16	Front mounting assembly.
17	Front suspension erection bracket bolts
18	Front suspension erection bracket bolts
19	Front suspension erection bracket nut
20	Suspension connecting bracket
21	Rear mounting connecting bracket bolt
22	Right mounting installation support
23	Right mounting assembly fixing nut

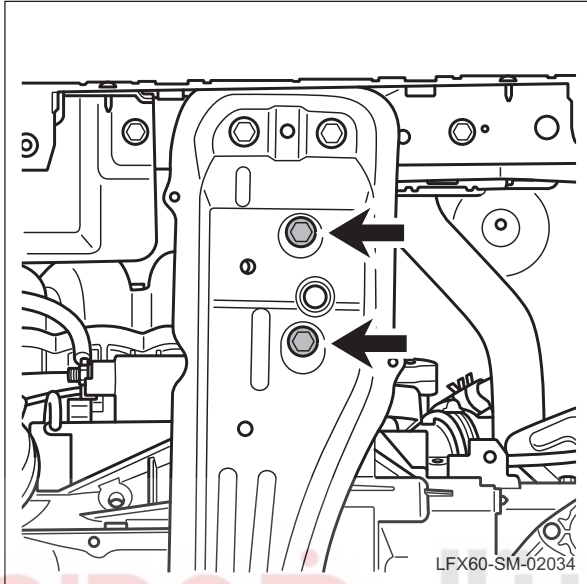


Removal and Installation

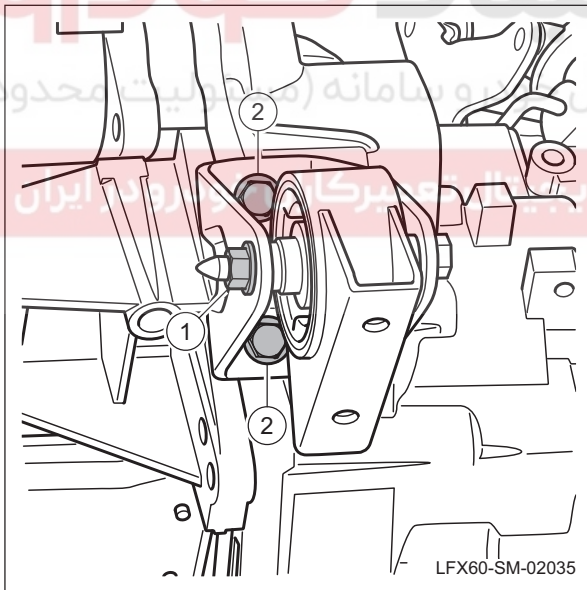
Front mounting assembly

Removal

1. Remove the front suspension components.



- (a). Lift the jack to support the engine assembly.
- (b). Remove the fixing bolts from the front suspension components.
- (c). Remove the front suspension components.



- (d). Remove the front suspension nut 1.
- (e). Remove the fixing bolt 2 from the front suspension bracket.
- (f). Remove the front suspension assembly.

Installation

1. Installation of the front suspension components.

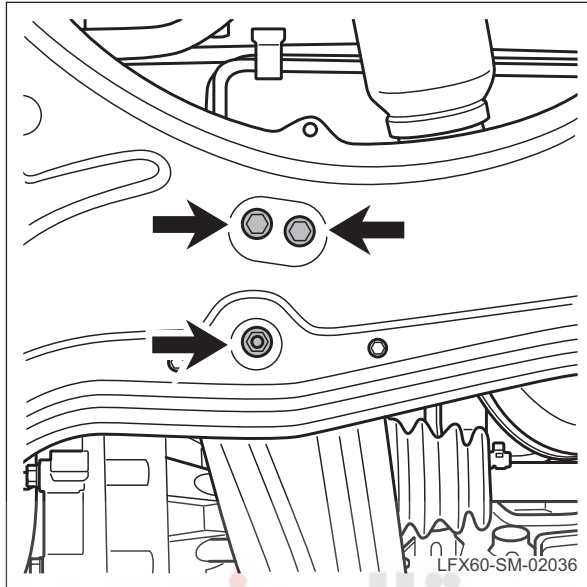
- (a). The installation sequence is the reverse of the disassembly order.

Rear mounting assembly. (MT)

Removal

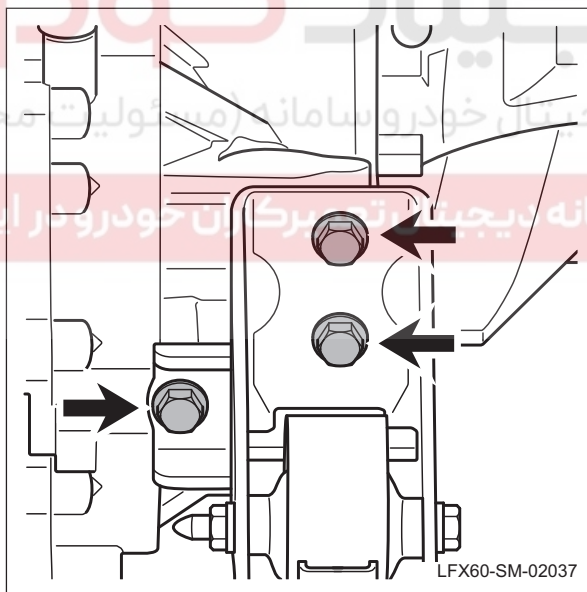
1. Remove the rear mounting assembly.

(a). Lift the vehicle.



- (b). Lift the jack to support the engine assembly.
 (c). Remove the rear mounting assembly fixing bolt and nut.

02



- (d). Remove the rear mounting assembly fixing bolt.
 (e). Remove the rear suspension components.

Installation

1. Install the rear mounting assembly.

(a). The installation sequence is the reverse of the disassembly order.

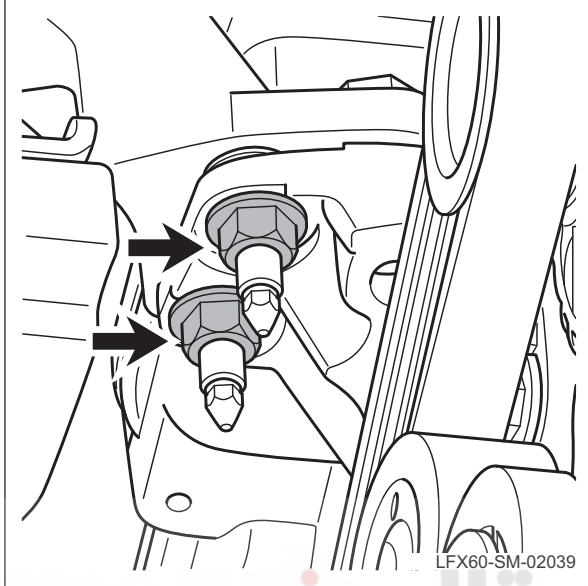


Right mounting assembly

Removal

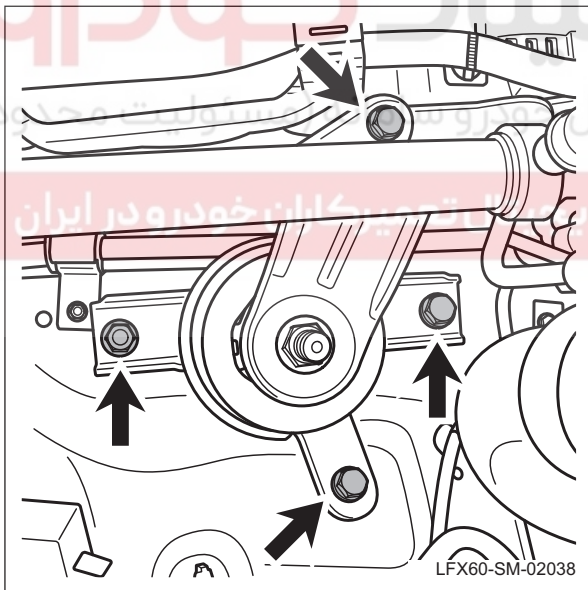
1. Remove the right suspension components.

(a). Lift the vehicle. Refer to the vehicle lift and support.



(b). Remove the fixing nuts from the right suspension components.

(c). Lift the jack to support the engine assembly.



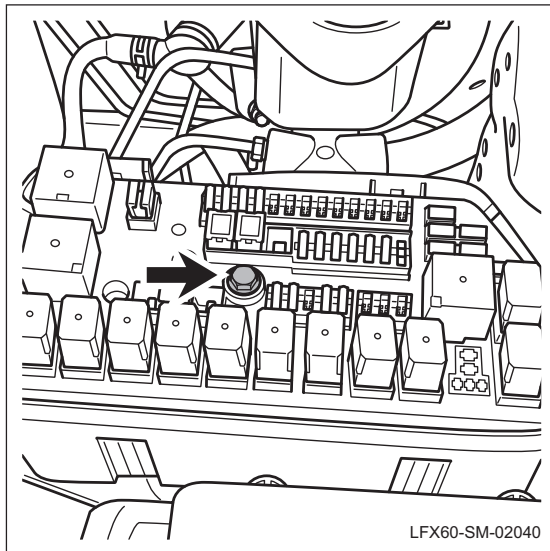
(d). Remove the fixing bolts and nuts from the right suspension components.

(e). Remove the right suspension components.

Installation

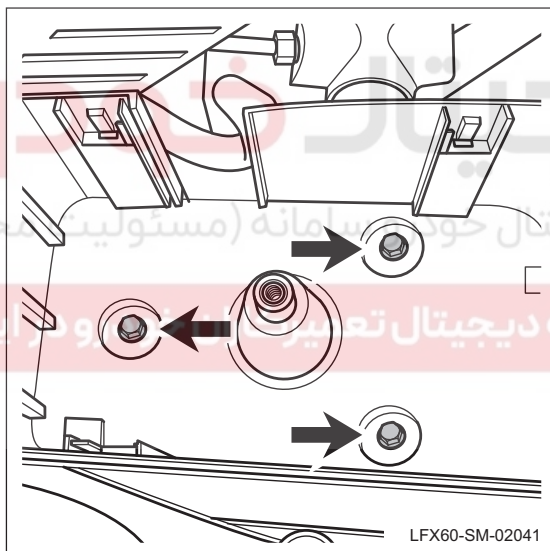
1. Installation the right suspension components.

(a). The installation sequence is the reverse of the disassembly order.

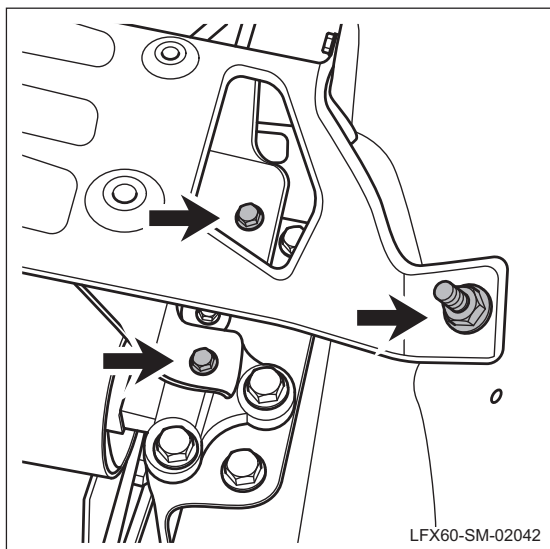
Left mounting assembly (MT)**Removal****1. Remove the front left mounting assembly.**

- (a). Remove the engine compartment fuse box cap.
- (b). Remove the engine compartment fuse assembly fixing bolt.
- (c). Disconnect fuse box assembly from the lower housing of the fuse box.

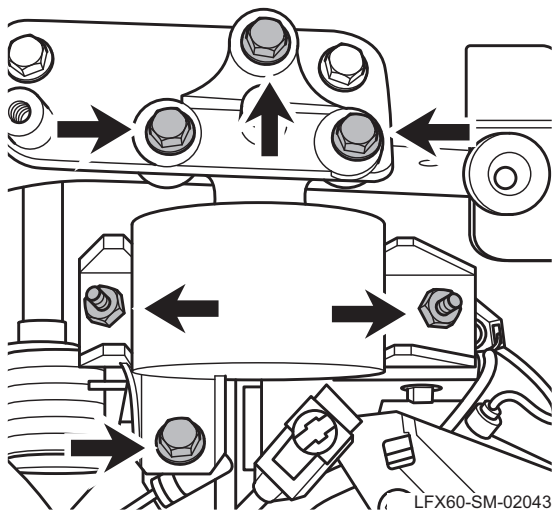
02



- (d). Remove the fixing bolts from the lower housing of the fuse box in the engine compartment.



- (e). Remove the fixing bolts and nuts from the fuse box bracket in the engine compartment.



- (f). Lift the jack to support the engine assembly.
- (g). Remove the front left mounting assembly fixing bolt and nut.
- (h). Take down the front left mounting assembly.

Installation

1. Install the left mounting assembly.

- (a). The installation sequence is the reverse of the disassembly order.

دیجیتال خودرو

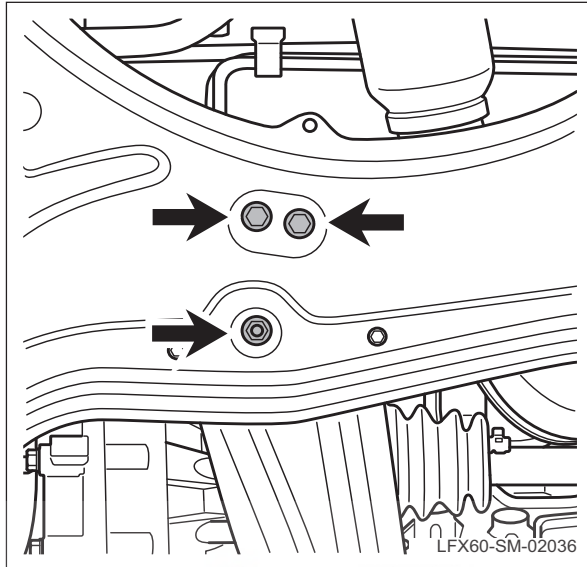
شرکت دیجیتال خودرو سامانه (مسئولیت محدود)

اولین سامانه دیجیتال تعمیرکاران خودرو در ایران



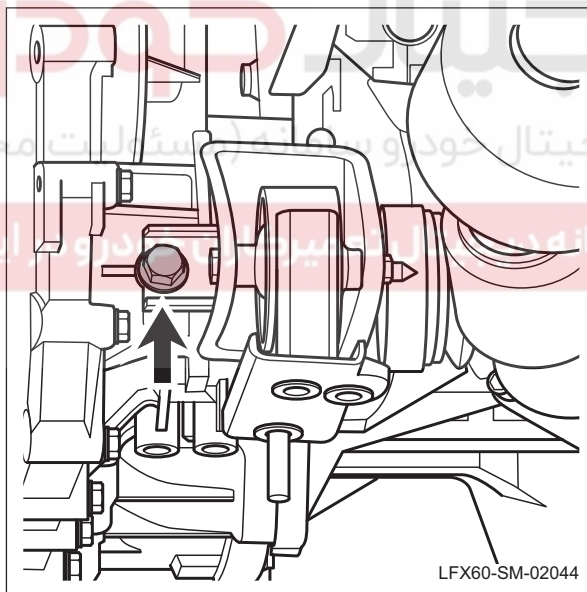
Rear mounting assembly. (CVT)**Removal****1. Remove the rear mounting assembly.**

(a). Lift the vehicle.

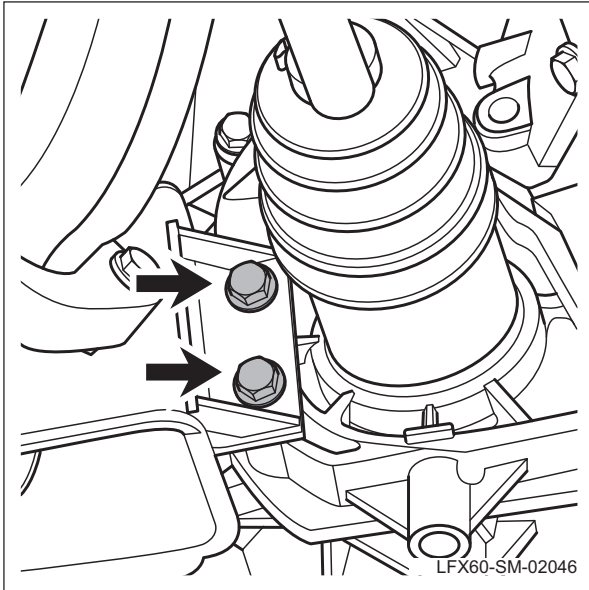


- (b). Lift the jack to support the engine assembly.
(c). Remove the rear mounting assembly fixing bolt and nut.

02



- (d). Remove the rear mounting assembly fixing bolt.



- (e). Remove the rear mounting assembly fixing bolt.
- (f). Remove the rear suspension components.

Installation

1. Install the rear mounting assembly.

- (a). The installation sequence is the reverse of the disassembly order.

دیجیتال خودرو

شرکت دیجیتال خودرو سامانه (مسئولیت محدود)

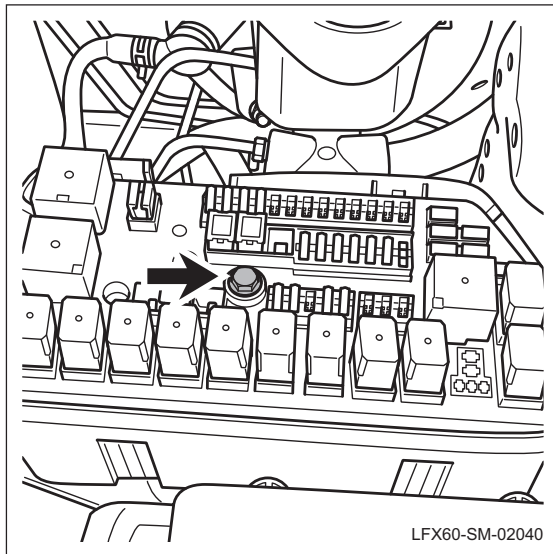
اولین سامانه دیجیتال تعمیرکاران خودرو در ایران



Left mounting assembly (CVT)

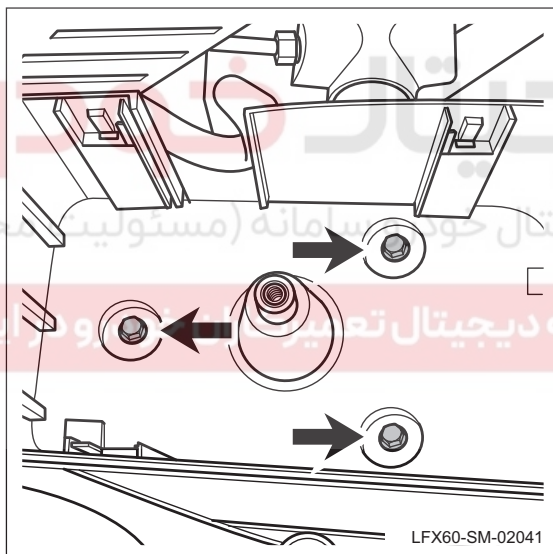
Removal

1. Remove the front left mounting assembly.

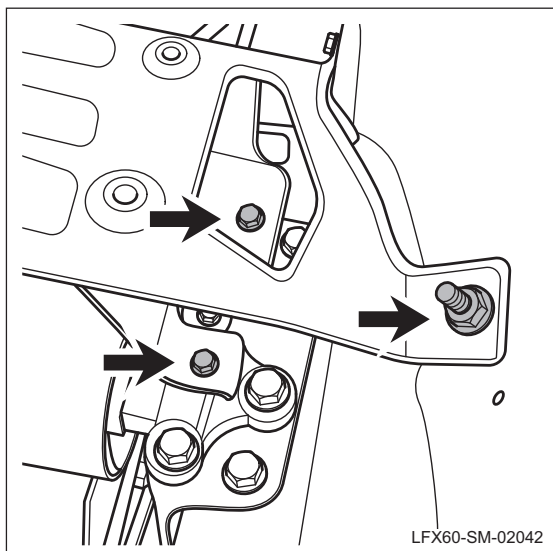


- (a). Remove the engine compartment fuse box cap.
- (b). Remove the engine compartment fuse assembly fixing bolt.
- (c). Disconnect fuse box assembly from the lower housing of the fuse box.

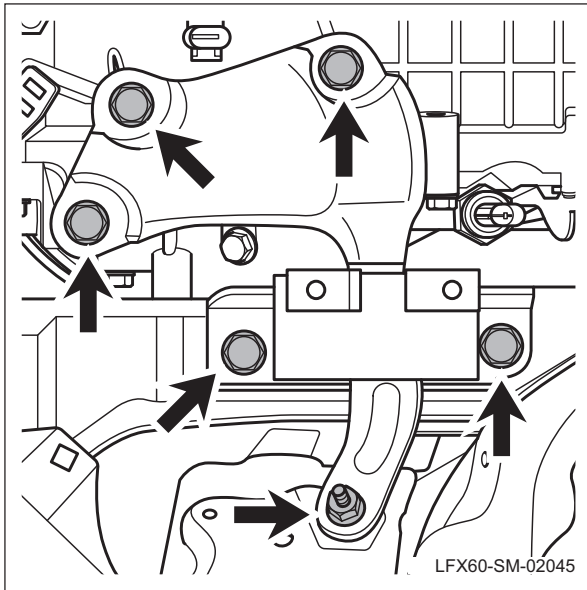
02



- (d). Remove the fixing bolts from the lower housing of the fuse box in the engine compartment.



- (e). Remove the fixing bolts and nuts from the fuse box bracket in the engine compartment.



- (f). Lift the jack to support the engine assembly.
- (g). Remove the front left mounting assembly fixing bolt and nut.
- (h). Take down the front left mounting assembly.

Installation

1. Install the left mounting assembly.

- (a). The installation sequence is the reverse of the disassembly order.

دیجیتال خودرو

شرکت دیجیتال خودرو سامانه (مسئولیت محدود)

اولین سامانه دیجیتال تعمیرکاران خودرو در ایران

